

Montageanleitung

FLAMRO BSB-K Plug

according to ETA-15/0816

- > The round recesses in the wall construction for the installation of the plugs must be coated thoroughly with ablation coating FLAMRO-KL.
- > An insulation present inside the wall must be pushed in ≥ 5 mm deep.
- > The installation of the FLAMRO BSB-K plugs must follow subsequently after the use of the fresh ablation coating Flamro-KL mass.
- > After the installation of the tailor-made cutted FLAMRO BSB-K plugs, occuring flaws around the area of the plug and cables / cable bundles / electric conduits must be sealed subsequently with FLAMRO-KL.
- > For electric conduits, the cable occupation can be laid coming from the installation pipes with a minimum distance of 350 mm from the penetration seal.
- > Sealing by inserted FLAMRO BSB-K Fire protection blocks. Led through cables, cable bundles, cable trays and cable ladders are coated with FLAMRO-KL, length 360 mm on both sides and symmetrically to the penetration seal.

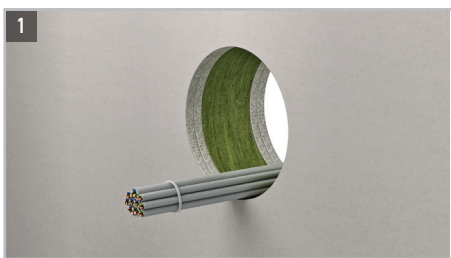
Montageanleitung

FLAMRO BSB-K Plug

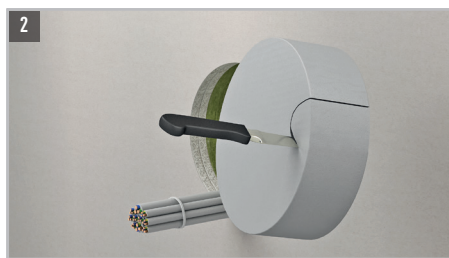
according to ETA-15/0816

Assembly

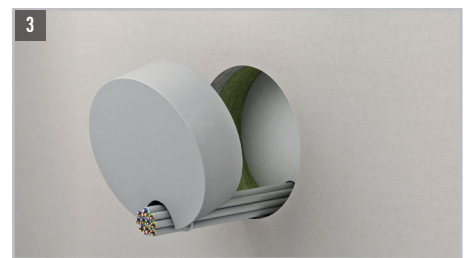
Assembly steps



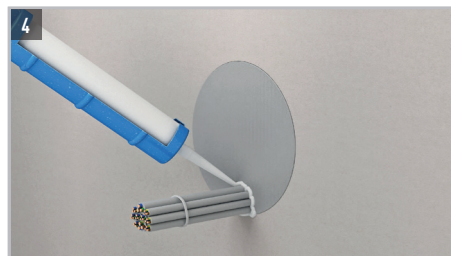
1 Clean the reveal opening and remove all loose parts. If necessary, cover the floor with appropriate materials. Check the mountings of the installations on the wall or floor (see -Arrangement of the first support (backings)-) and check the wall or floor thickness.



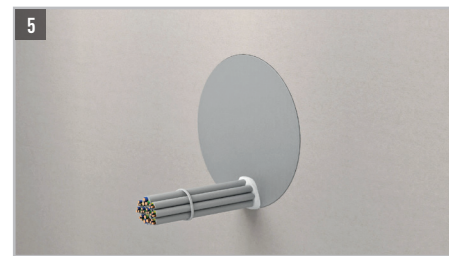
2 The round recesses in the wall construction for the installation of the plugs must be coated thoroughly with ablation coating FLAMRO-KL. An insulation present inside the wall must be pushed in ≥ 5 mm deep. The elastic material can be cut custom-fit with a knife.



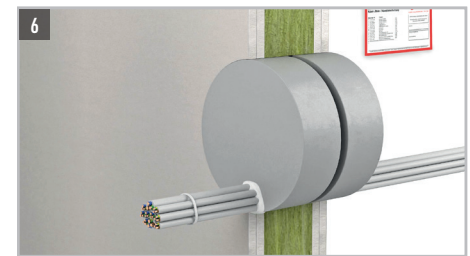
3 The fire protection plugs must be cut custom-fit so that an airtight connection to the building component is created.



4 The remaining joints and gaps are to be sealed with FLAMRO BSB-KL mass.



5 Check the penetration seal for completion.



6 Finally, apply the identification sign permanently to the penetration seal. The identification sign must be mounted next to the penetration seal and is available at FLAMRO.

Subsequent installation and dismantling

Subsequent installation and dismantling of cables and electric conduits is permitted.

Subsequent installations are to be performed according to this assembly instruction.